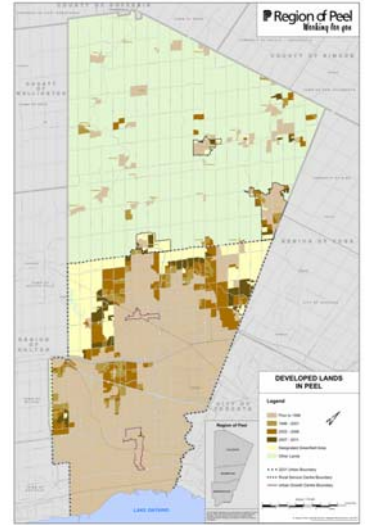
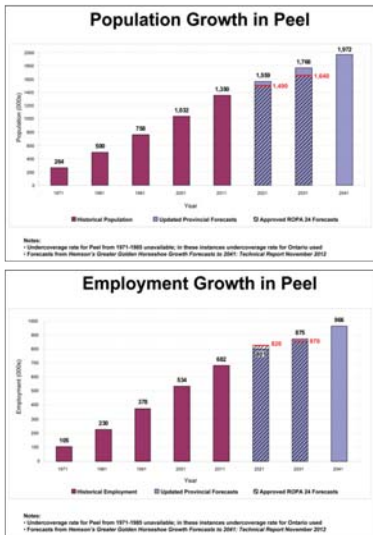


Growth Management

Goal : Sustainable Communities

- Compact, Vibrant and Complete
- Walkable and Transit Oriented
- Efficient Infrastructure and Services
- Enhanced Environment
- Protected Resources
- Strong Economy
- High Quality of Life



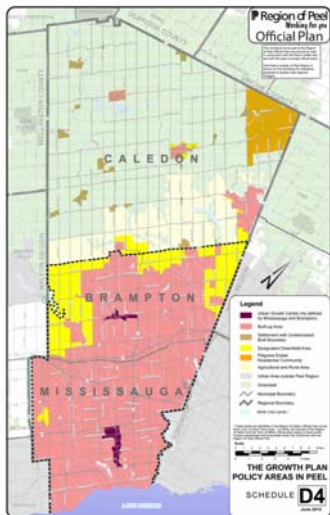
Growing Where We Invest

Drivers

- Faster than Forecasted Population Growth
- Revised Provincial Forecasts to 2036/2041
- Provincial Policy Statement
- Infrastructure Investment

Challenges

- Balance between Intensification and Greenfield Development
- Balance between Residential and Non-Residential Development
- Emerging Urban Forms
- Provision of Infrastructure and Services



Topics for Further Exploration

- Population and Employment Forecasts
- Intensification Targets
- Density Targets
- Settlement Boundary Expansions
- Regional Structure

Health & Planning

Defining Walkable Communities

- Walkable communities have positive impacts on health including influencing higher rates of walking and lowering body weights.
- Peel's Healthy Development Index identifies seven elements of the built environment associated with walkable communities:
 - Higher Density
 - Service Proximity
 - Location of Parking Scale
 - Road Network & Sidewalk Characteristics
 - Street Connectivity
 - Land Use Mix
 - Aesthetics & Human



Celebration Square, Mississauga
Photo Credits: City of Mississauga

**Healthy
Communities
Support
Healthy
People**

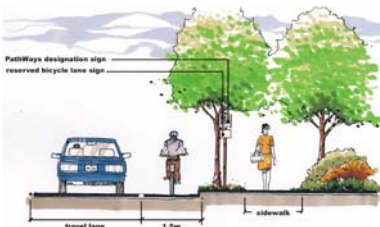


Photo Credits: Brampton PathWays

Drivers

- Evidence demonstrates a strong connection between the design of our communities and health, as it relates to our ability to walk, cycle and be active.
- Half of Ontarians are inactive. It was estimated in 2011 that the rates of inactivity were associated with \$2.9 billion dollars in indirect and direct costs.
- In some areas of Peel, more than 60% of people are overweight/obese.

Topics for Further Exploration

- What features of planning and community design would encourage you to walk more?
- What should be the role of the Regional Official Plan and Health Services' in supporting healthy communities?



Queen Street, Bolton
Photo Credit: Bolton Community Improvement Plan (2009)

Housing

Meeting the Housing Needs of Peel Residents

- The Region of Peel is committed to addressing the affordable, accessible, adequate and appropriate housing needs of Peel's current and future residents.
- Meeting the needs of Peel's diverse population by providing a range of housing choices fosters liveable and vibrant communities.



Nance Horwood Place



Chapelview Apartments



Henderson Ave. Apartments

**Achieve a
Range &
Mix of
Housing**

Drivers

- Housing demands and needs continue to evolve and change.
- Municipalities are required to permit second units as of right in Official Plans.
- Peel's Housing and Homelessness Plan is under development.
- The Provincial Policy Statement (PPS) is currently under review.

Topics for Further Exploration

- An update to policies to meet second unit requirements of the Ontario Planning Act.
- Potential housing policy recommendations from Peel's Housing and Homelessness Plan.
- Responding to the housing needs of our residents to create healthy, vibrant and complete communities.
- Are Regional housing policies addressing housing needs in Peel?



Legal Second Units



Transportation

Peel's Vision for Transportation

“Peel Region will have a safe, convenient, efficient, multi-modal, sustainable and integrated transportation system that supports a vibrant economy, respects the natural environment, meets the diverse needs of residents and contributes to a higher quality of life.”



Queen Elizabeth Way HOV Lanes, Mississauga



Highway 401 & Winston Churchill Blvd. Interchange, Mississauga

Main Message

**Moving
People &
Goods**

Drivers

- Integrating transit & land use
- Moving goods efficiently
- Focus on sustainable modes of transportation



Malton Go Train Station, Mississauga

Topics for Further Exploration

- Metrolinx Investment Strategy
- Transportation Demand Management 5 Year Plan Update
- Accessible Transportation Master Plan



Lake of Dreams – Bovaird Drive Trail, Brampton

Agriculture

Protecting Agricultural Resources

- The protection of agricultural resource areas and the viability of the sector ensures local food production and a healthy rural economy.



Drivers

- Agriculture continues to adapt to market demand and opportunities.
- There are new opportunities for near urban agriculture as the Region has a growing and culturally diverse population.
- The Provincial Policy Statement provides direction for the protection of agricultural lands.
- The Golden Horseshoe Food & Farming Action Plan, 2021, co-ordinates planning and economic development to grow the sector.

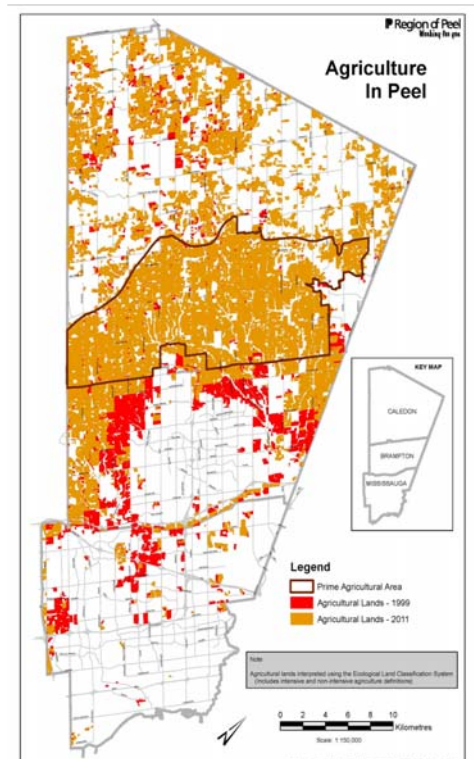


Image 2021

**Support
Viable Food
& Farming
Systems**

Topics for Further Exploration

- Identification of prime agricultural lands through a Land Evaluation and Area Review.
- Planning guidelines to mitigate the effect of urban and rural non-farm land uses on agriculture.
- Are policy revisions needed to support new agriculture and agri-food opportunities?
- What other agriculture policy improvements or initiatives are needed?



Climate Change

What is climate change?

Climate change is any change in climate over time, whether due to natural changes or as a result of human activity.

For Peel, this means that we will experience:

- Hotter summers
- Warmer winters
- More frequent and extreme weather events

The Region, the local municipalities and conservation authorities, are taking a proactive approach to address climate change by coordinating adaptation and mitigation efforts.

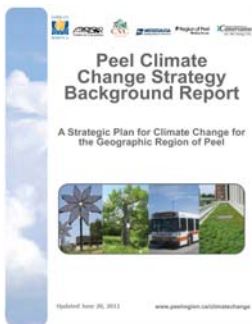
Mitigation

Actions taken to reduce or prevent emission of greenhouse gases.

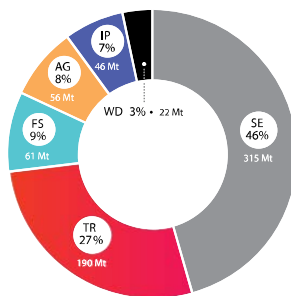
Adaptation

Actions taken to adjust to the impacts of climate change.

What are the drivers for addressing climate change?



- Regional Council adopted the Peel Climate Change Strategy on June 23, 2011. It guides partners to adapt and mitigate against impacts of climate change.
- Provincial Policy Statement (PPS) – Ontario is reviewing the PPS to include climate change as a provincial interest.



Source: Data taken from Environment Canada 2011b

- **Stationary Energy (SE)**
Emissions from fuel combustion (e.g., for energy and heat production, manufacturing, construction, etc.).
- **Transport (TR)**
Emissions from fuel combustion related to passenger and freight transportation.
- **Fugitive Sources (FS)**
Intentional and unintentional emissions from fossil fuel production, processing, transmission, storage and delivery.
- **Agriculture (AG)**
Emissions from the production of crops and animals.
- **Industrial Processes (IP)**
Emissions from processes such as mineral, chemical, and metal production.
- **Waste Disposal (WD)**
Emissions from the disposal of solid waste and handling of wastewater.

Canada's GHG emissions by sector, 2009 (Source: National Roundtable on the Environment and Economy)

Topics for Further Exploration

- How will climate change affect the following sectors?
 - Public Health
 - Transportation, infrastructure and built form
 - Agriculture
 - Natural heritage
 - Water resource
 - Energy
 - Human Services
- How will climate change affect how Peel and its partners deliver programs and services?
- How can Peel and its partners work together to plan for resilient communities that can withstand the impacts of climate change?

Greenlands System Planning

Protecting Peel Region's Natural Areas

- The Region and its partners work together to protect, restore and enhance natural areas.
- The Greenlands System in Peel is comprised of features (e.g., rivers & forests) and the surrounding areas that link together and support them.
- This connected natural system provides natural services such as clean water and air, habitat for plants and animals, as well as cultural, recreational and health benefits.



Rattray Marsh, Mississauga

Drivers

- The health and resilience of Peel's Greenlands System continues to be affected by growth and land use activities.
- The Provincial Policy Statement provides direction to municipalities in regards to the protection of natural heritage areas.

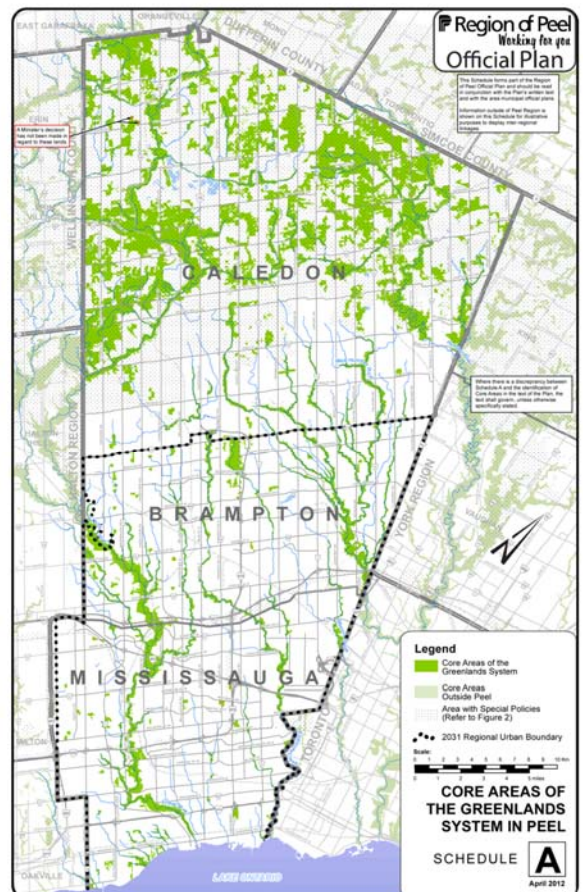
**Supports
Healthy,
Sustainable
Communities**

Topics for Further Exploration

- Should the Region's policy direction for Natural Heritage Systems planning be improved?
- How should the Region identify an updated Greenlands System for Peel?
- What actions are needed to achieve the Region's natural heritage objectives?



Heart Lake Conservation Area, Brampton

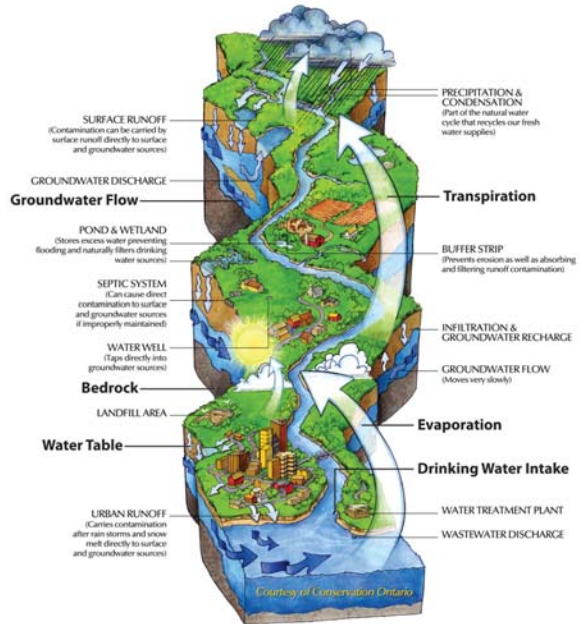


Water Resources

Managing Water Resources

- The Region of Peel and its partners protects, manages and conserves water resources at a Regional scale in order to ensure:
 - Clean drinking water for residents
 - Health and safety of the community
 - Environmental well-being
 - Management of stormwater
 - Water Conservation

Watershed Connections



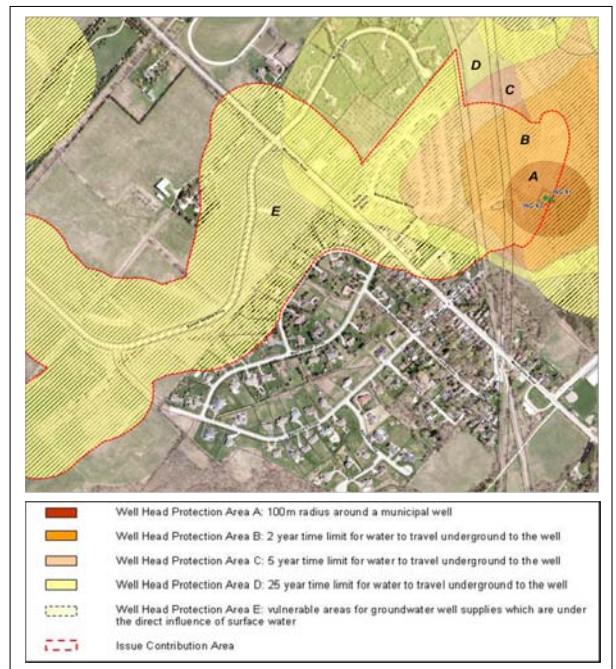
Drivers

- Clean Water Act, 2006 helps to protect sources of drinking water through locally developed protection plans.
- Lake Simcoe Protection Act, 2008 allowed for the creation of a plan to protect and restore the health of Lake Simcoe.
- Great Lakes Protection Act, if enacted, will provide direction to municipalities to protect the watershed, wetlands and coastal areas of the great lakes.
- Provincial Policy Statement provides direction to municipalities in regard to water resources.

**Protect
Drinking
Water
Sources**

Topics for Further Exploration

- Should the Region's stormwater management policies be strengthened?
- Are the region's current policies sufficient to protect water quality and quantity?
- Should policies be amended to protect vulnerable drinking water areas?



Well Head Protection Areas in Inglewood, Caledon

Regional Official Plan Review

The Regional Official Plan is a long-term strategy to guide growth in Peel. It charts the future of our communities with respect to:

- Protecting the environment
- Development in urban and rural areas
- Future infrastructure and service needs
- Safe and healthy communities
- Natural and cultural heritage
- Economic sustainability

The Official Plan Review Process

The Region undertakes a review of the Official Plan every five years as mandated by the Ontario Planning Act. This helps us better plan for the future of Peel by allowing us to:

- Collect feedback from our valued residents, businesses and employees
- Take action based on new population and employment forecasting
- Maintain compliance with new provincial legislation, plans and policies.

Your input matters! Share your feedback at the following events:

Open Houses

May 1, 2013, 7–9 p.m., Mississauga Central Library
May 8, 2013, 5–8 p.m., Brampton City Hall
May 8, 2013, 6–9 p.m., St. James Anglican Church, Caledon

Public Meeting

May 23, 2013, 9:30 a.m., Council Chambers,
Region of Peel Headquarters, Brampton

Your Feedback Considered
for the ROP
Review Workplan

Fall 2013
Regional Staff to Prepare
Workplan
for Council Approval

2014 and 2015
Discussion Papers,
Workshops,
Prepare Draft Policies

2014 and 2015
Further Open Houses and
Public Meetings on
Draft Policies

2014 and 2015
Regional Council
Adoption of Policies

Thank you for contributing to
the review of our Official Plan.