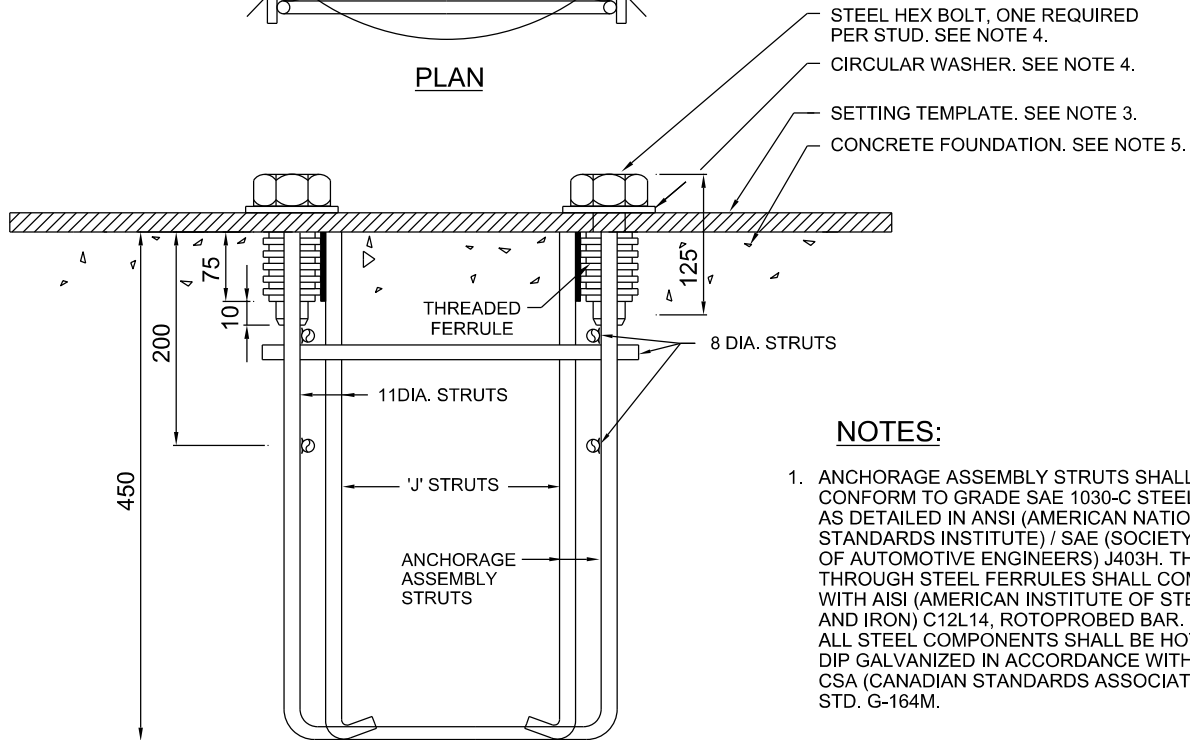


PLAN

BOLT TABLE

POLE LENGTH mm	BOLT CIRCLE 'A' mm	BOLT SQUARE 'B' mm	BOLT DIA. mm
PEDESTAL	406	287	32
4600	254	180	22
6100	406	287	32
7300	406	287	32
10700	406	287	32
13700	406	287	32



ELEVATION

NOTES:

1. ANCHORAGE ASSEMBLY STRUTS SHALL CONFORM TO GRADE SAE 1030-C STEEL AS DETAILED IN ANSI (AMERICAN NATIONAL STANDARDS INSTITUTE) / SAE (SOCIETY OF AUTOMOTIVE ENGINEERS) J403H. THREADED THROUGH STEEL FERRULES SHALL COMPLY WITH AISI (AMERICAN INSTITUTE OF STEEL AND IRON) C12L14, ROTOPROBED BAR. ALL STEEL COMPONENTS SHALL BE HOT DIP GALVANIZED IN ACCORDANCE WITH CSA (CANADIAN STANDARDS ASSOCIATION) STD. G-164M.
2. BOLTS SHALL BE COATED WITH WHITE NON-STAINING GREASE PRIOR TO POURING CONCRETE.
3. A SETTING TEMPLATE SHALL BE PROVIDED FOR ACCURATE POSITIONING OF THE ANCHOR WITHIN THE FORM.
4. STEEL HEX. BOLTS (FULLY THREADED) AND HARDENED STEEL WASHERS SHALL BE IN ACCORDANCE WITH ASTM SPEC. A-325 AND SHALL BE HOT DIP GALVANIZED IN ACCORDANCE WITH CSA STD. G-164M.
5. CONCRETE FOUNDATION FOR ANCHORAGE ASSEMBLY TO BE IN ACCORDANCE WITH STD. 4-7-2

ALL DIMENSIONS IN MILLIMETRES
UNLESS OTHERWISE NOTED



**PUBLIC WORKS
STANDARD DRAWING**

REV. DATE: DECEMBER 2018

APPROVED BY

DRAWN BY

GK

TSS SECTION

STD. DWG. NUMBER

SCALE

4-7-1

N.T.S.

**ANCHORAGE ASSEMBLY
FOR CONCRETE FOOTING**